

WARNINGS

Allay should not be used by persons with a cardiac pacemaker, cardioverter defibrillator, neurostimulator or any active medical or metallic implant that is within the area of application.

Allay should not be used by women who are pregnant or think they may be pregnant.

Allay is not a sterile device. If using over an open wound, cover the wound with sterile gauze prior to applying Allay.

Discontinue use if rash or skin irritation develops. Consult your physician before using Allay again.

Do not stand, walk, or put body weight on the Allay as this may damage the circuitry.

Allay can be disposed of in a normal trash container.

Allay will not interfere with other electronic equipment in use.

Always consult a qualified health care practitioner to evaluate your condition prior to using Allay. If pain or swelling persist or worsen, discontinue use and seek medical attention immediately.

U.S. & Foreign Patents Pending
Safe for Diabetics, Arthritics,
Elderly, the Bed Ridden and on Open Wounds



1-866-757-2284
Manufactured by:
BioElectronics Corporation
4539 Metropolitan Court
Frederick, MD 21704
Stock symbol: BIEL
www.BioElectronicsCorp.com



0470



Read instructions before using

DFU-ALL-USA-001



Directions for Use

WARNINGS

Allay should not be used by persons with a cardiac pacemaker, cardioverter defibrillator, neurostimulator or any active medical or metallic implant that is within the area of application.

Allay should not be used by women who are pregnant or think they may be pregnant.

Allay is not a sterile device. If using over an open wound, cover the wound with sterile gauze prior to applying Allay.

Discontinue use if rash or skin irritation develops. Consult your physician before using Allay again.

Do not stand, walk, or put body weight on the Allay as this may damage the circuitry.

Allay can be disposed of in a normal trash container.

Allay will not interfere with other electronic equipment in use.

Always consult a qualified health care practitioner to evaluate your condition prior to using Allay. If pain or swelling persist or worsen, discontinue use and seek medical attention immediately.

U.S. & Foreign Patents Pending
Safe for Diabetics, Arthritics,
Elderly, the Bed Ridden and on Open Wounds



1-866-757-2284
Manufactured by:
BioElectronics Corporation
4539 Metropolitan Court
Frederick, MD 21704
Stock symbol: BIEL
www.BioElectronicsCorp.com



0470



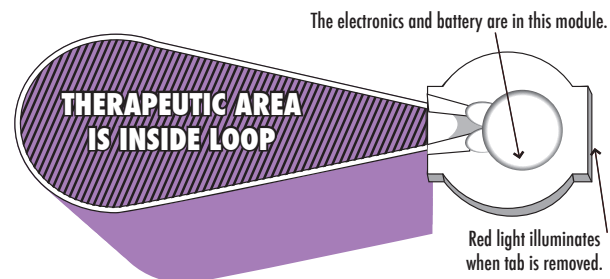
Read instructions before using

DFU-ALL-USA-001



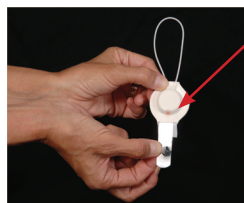
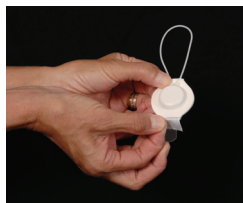
Directions for Use

Your Allay Menstrual Therapy Kit Contains:
One 12cm Allay Loop Device and One Allay Wrap



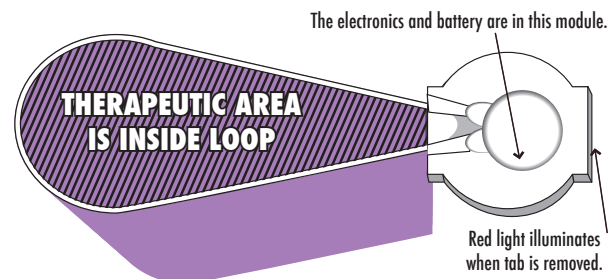
Step One: Activate the Allay Loop.

Hold the white foam portion of the Allay loop and gently pull and remove the white paper tab and then pull and remove the clear tab. Squeeze the foam together to reseal the battery and electronics module. A faint red light confirms the Allay is activated.



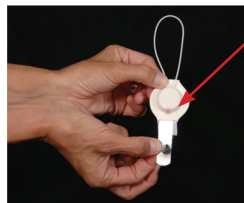
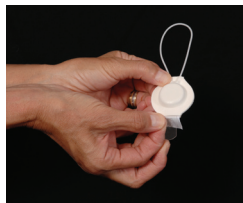
The red indicator light shows that the Allay is on and working.

Your Allay Menstrual Therapy Kit Contains:
One 12cm Allay Loop Device and One Allay Wrap



Step One: Activate the Allay Loop.

Hold the white foam portion of the Allay loop and gently pull and remove the white paper tab and then pull and remove the clear tab. Squeeze the foam together to reseal the battery and electronics module. A faint red light confirms the Allay is activated.



The red indicator light shows that the Allay is on and working.

Step Two:

Insert the activated Allay loop into the pocket of the wrap. Position the wrap so that the Allay loop is directly over the area of pain and secure the wrap in place. Do not overtighten the wrap as this may restrict circulation. Allay is not a sterile device.



For best results:

Apply the Allay loop immediately after menstrual symptoms occur and wear continuously until healed or for a minimum of 6-8 hours daily. Remove Allay before bathing or showering and store in a cool dry location.

Step Two:

Insert the activated Allay loop into the pocket of the wrap. Position the wrap so that the Allay loop is directly over the area of pain and secure the back wrap in place. Do not overtighten the wrap as this may restrict circulation. Allay is not a sterile device.



For best results:

Apply the Allay loop immediately after menstrual symptoms occur and wear continuously until healed or for a minimum of 6-8 hours daily. Remove Allay before bathing or showering and store in a cool dry location.

FREQUENTLY ASKED QUESTIONS

What is Allay? Allay is a miniaturized medical device that delivers continuous electromagnetic therapy to restore damaged cells. Allay quickly relieves edema, inflammation and pain, providing patient comfort while reducing bruising and speeding up the onset of natural healing.

How does Allay work? Tissue cells are tiny, electrically charged machines. When traumatized by surgery or injury cell's electrical charge is diminished, which causes normal cell functions and operations to shut down. Chemical signals that cause inflammation are released, resulting in pain and inhibiting the cell communication necessary for healing to begin. Allay induces a mild electrical current into damaged cells at frequency which recharges the cell, stops the release of pain and inflammatory mediators, increases blood flow and re-establishes normal cell interaction. As a result, your body can begin to heal faster and you experience less swelling, pain and bruising.

Is Allay Safe? Allay is extremely safe and comfortable to wear. The low level current that is gently pulsed into damaged tissue is not discernible, even though the device is continuously working to help you heal.

FREQUENTLY ASKED QUESTIONS

What is Allay? Allay is a miniaturized medical device that delivers continuous electromagnetic therapy to restore damaged cells. Applied post-surgically or to an injury, Allay quickly relieves edema, inflammation and pain, providing patient comfort while reducing bruising and speeding up the onset of natural healing.

How does Allay work? Tissue cells are tiny, electrically charged machines. When traumatized by surgery or injury cell's electrical charge is diminished, which causes normal cell functions and operations to shut down. Chemical signals that cause inflammation are released, resulting in pain and inhibiting the cell communication necessary for healing to begin. Allay induces a mild electrical current into damaged cells at frequency which recharges the cell, stops the release of pain and inflammatory mediators, increases blood flow and re-establishes normal cell interaction. As a result, your body can begin to heal faster and you experience less swelling, pain and bruising.

Is Allay Safe? Allay is extremely safe and comfortable to wear. The low level current that is gently pulsed into damaged tissue is not discernible, even though the device is continuously working to help you heal.